



# Metsäteho

Company and mission



# Metsäteho's mission

A modern wood procurement development company building a better future for the industry

We enable work towards the future of the forestry industry.

We create new and efficient solutions.

We improve the operating conditions for responsible wood supply.

We promote wellbeing and professional development within the industry.

We are proactive and use our networks to develop industry practices.



# Operating principles

- Applied research to strengthen the operating conditions for responsible wood supply
- Research projects, recommendations, learning environments and education and training
- Working closely with an extensive network of partners allows us to organise new opportunities, coordinate research consortia and cooperate closely with field teams and those who make use of the research outcomes.
- Together with our partner network, we are creating opportunities across the industry and beyond.



# Light structure, extensive networks

Founded in 1945, became a limited company in 1996

Office in Tikkurila, Vantaa

Around 12 permanent employees

Interns, students writing their Master's thesis and project workers are an important part of the team

High effectiveness through a strong network

Dozens of partners from research institutions and other organisations take part in projects

Projects vary in their size and scope: duration can be from weeks to years



# Shareholders from across the forestry industry

- Continuous communication with the shareholders on R&D
- A research committee consisting of shareholders determines and sets guidelines for research areas and makes more detailed decisions concerning development projects.
- The Board of Directors is responsible for identifying the company's main orientations.

**HARVESTIA**



KOSKISEN



UPM



KUHMO

**POLKKY**



storaenso

**versowood**

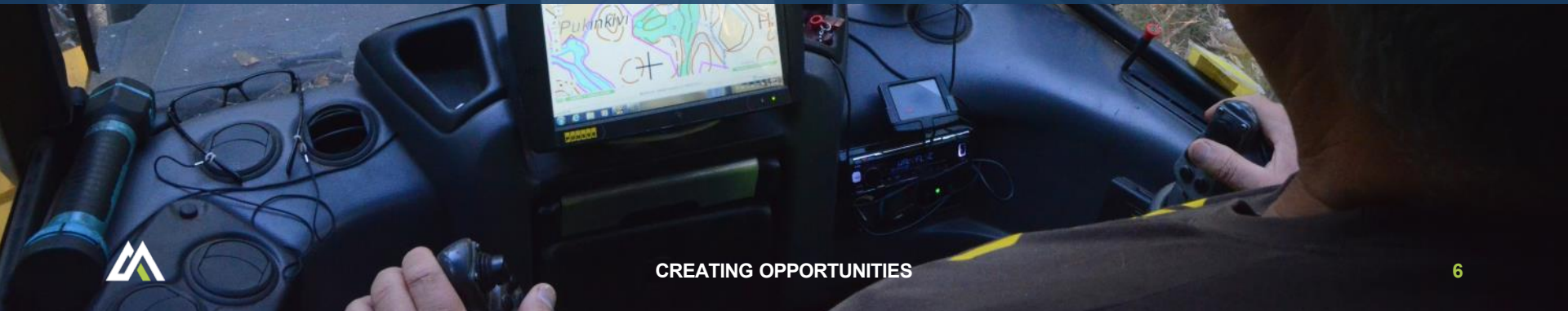


YKSITYRIMETSÄTALOUIDEN TYÖNANTAJAT -  
PRIVATSKOGSBRUKETS ARBETSgivARE F.V.



## VISION: EFFICIENT WOOD SUPPLY 2025

Efficient and precise wood supply improves the competitiveness of the forest industry and guarantees its growth and regeneration potential.





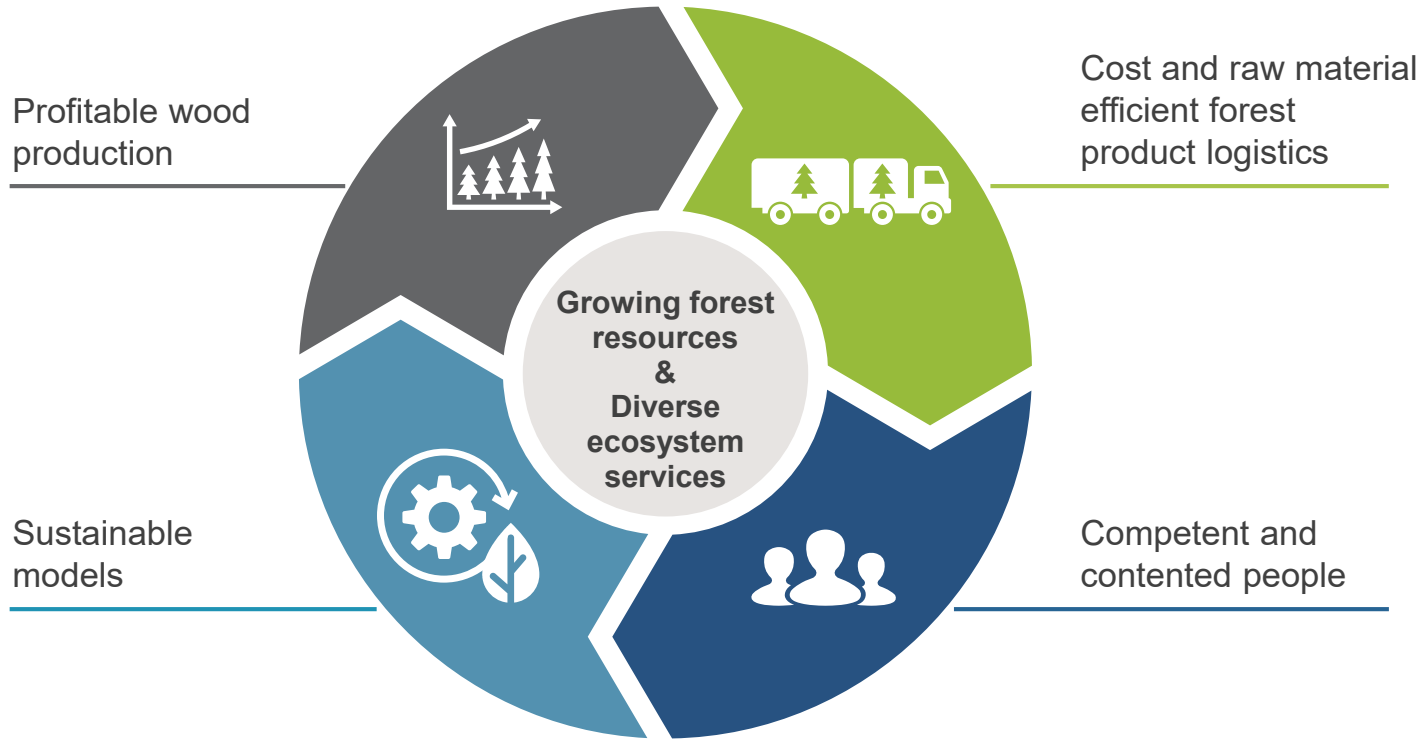


## DEVELOPMENT TARGET FOR 2025

Wood supply to be sustainable, to add value to the wood value chain, and to be 30 percent more cost-effective.



# Wood supply R&D objectives





# R&D focus areas 2018–2025



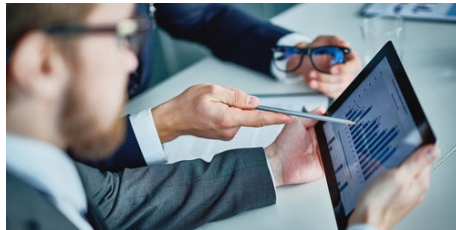
**INFORMATION ECOSYSTEMS AND  
DECISION SUPPORT SYSTEMS**



**SUSTAINABILITY**



**OCCUPATIONAL SAFETY,  
WELLBEING AND COMPETENCE**



**RESOURCE- AND ENERGY-  
EFFICIENCY**



**TRANSPORTATION  
SYSTEMS**



**IMPROVING WOOD PRODUCTION  
EFFICIENCY**





JOIN US IN BUILDING A MORE  
SUSTAINABLE FUTURE