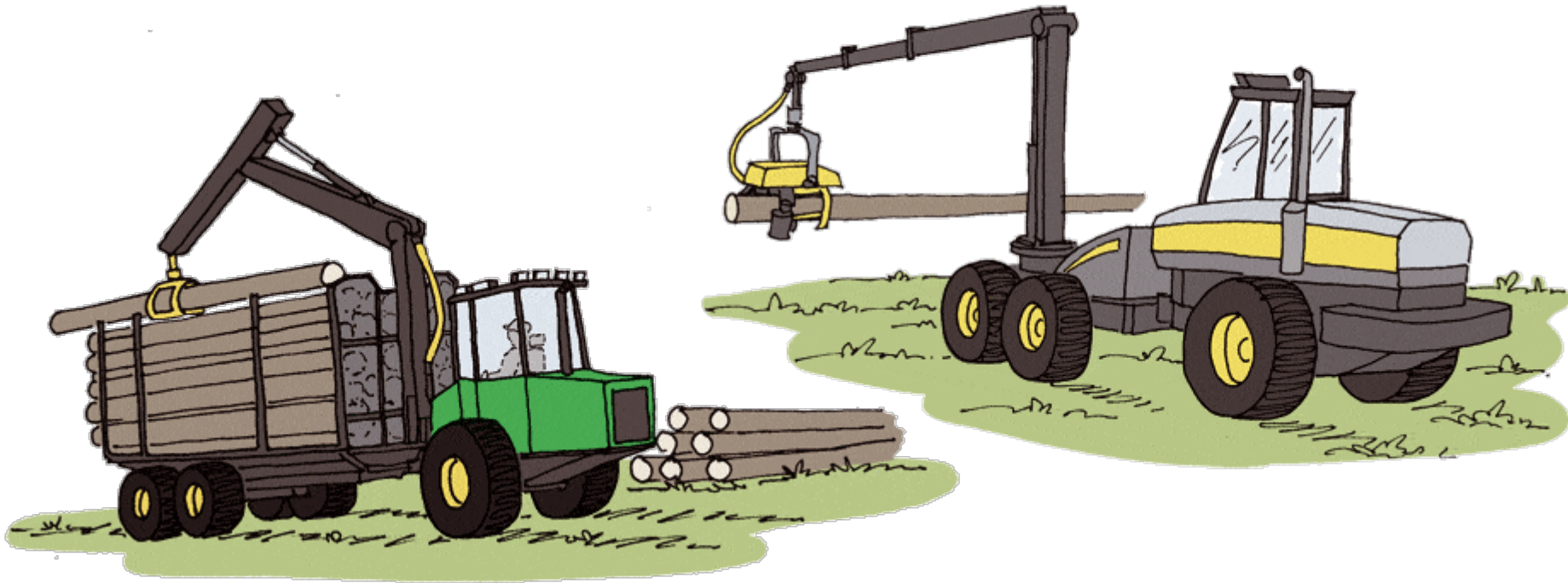


## Harvesting Statistics on 2005

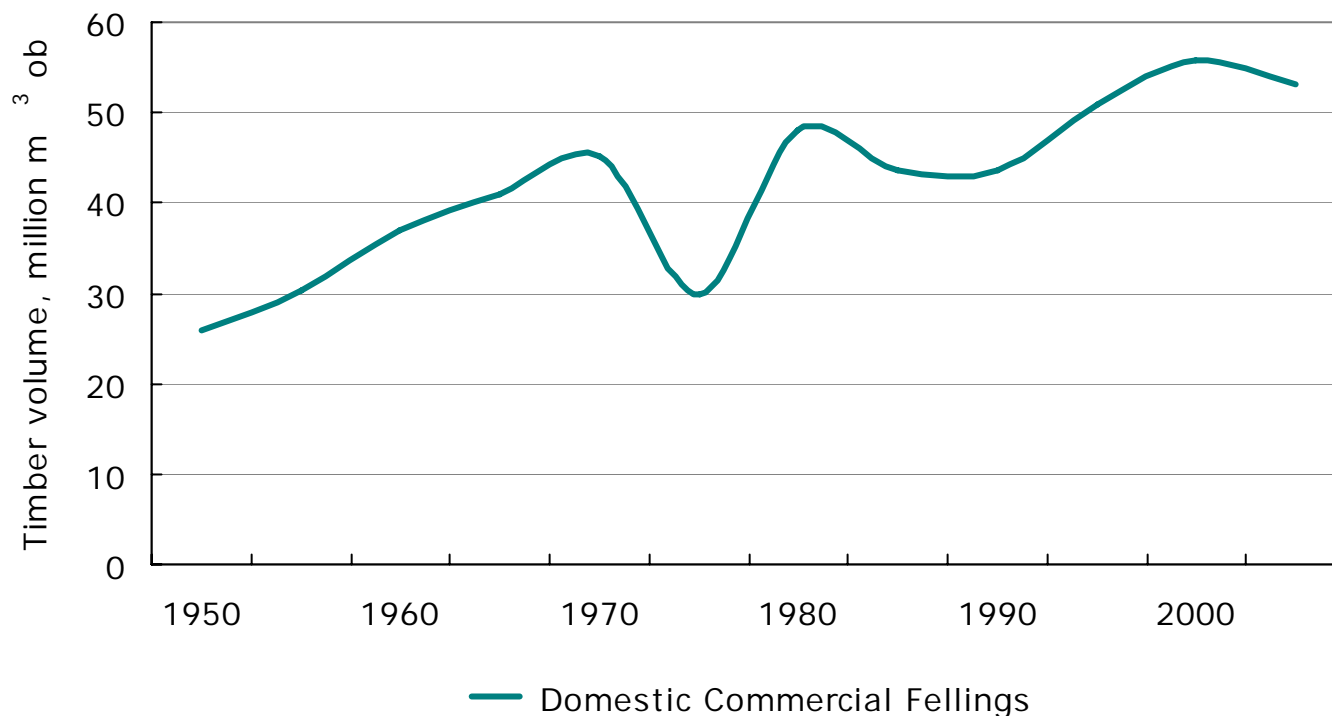


Arto Kariniemi

## Target and Publications

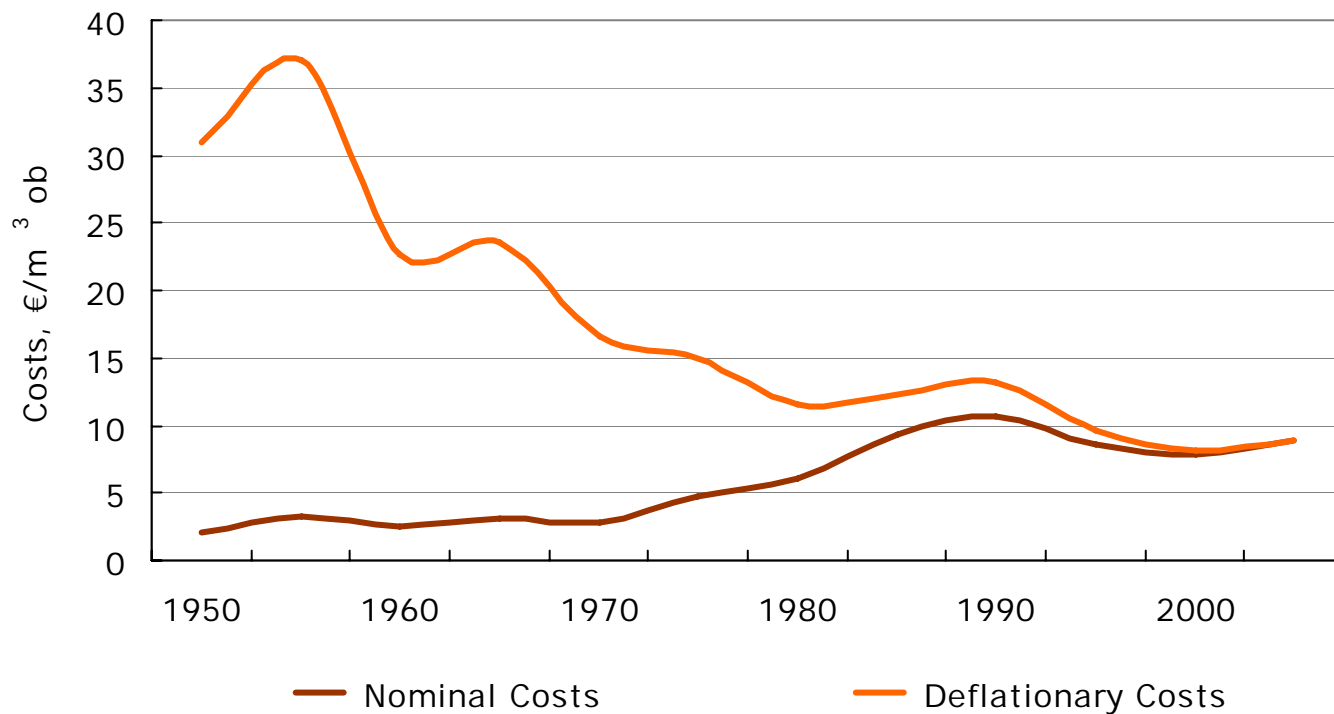
- Includes volumes and direct harvesting costs of timber assortments concerning domestic roundwood by the forest industries and Metsähallitus as well as proportions of harvesting methods.
- Statistic covers 77 % of commercial roundwood.
- Look at also Finnish Statistical Yearbook of Forestry (Finnish Forest Research Institute), especially chapter 5 "Harvesting and transportation of roundwood."
- Publications
  - Metsäteho Review 19:  
"Puunkorjuu ja kaukokuljetus vuonna 2005"  
(*Harvesting and Long-distance Transportation on 2005*)

## Domestic Commercial Fellings 1950 - 2005



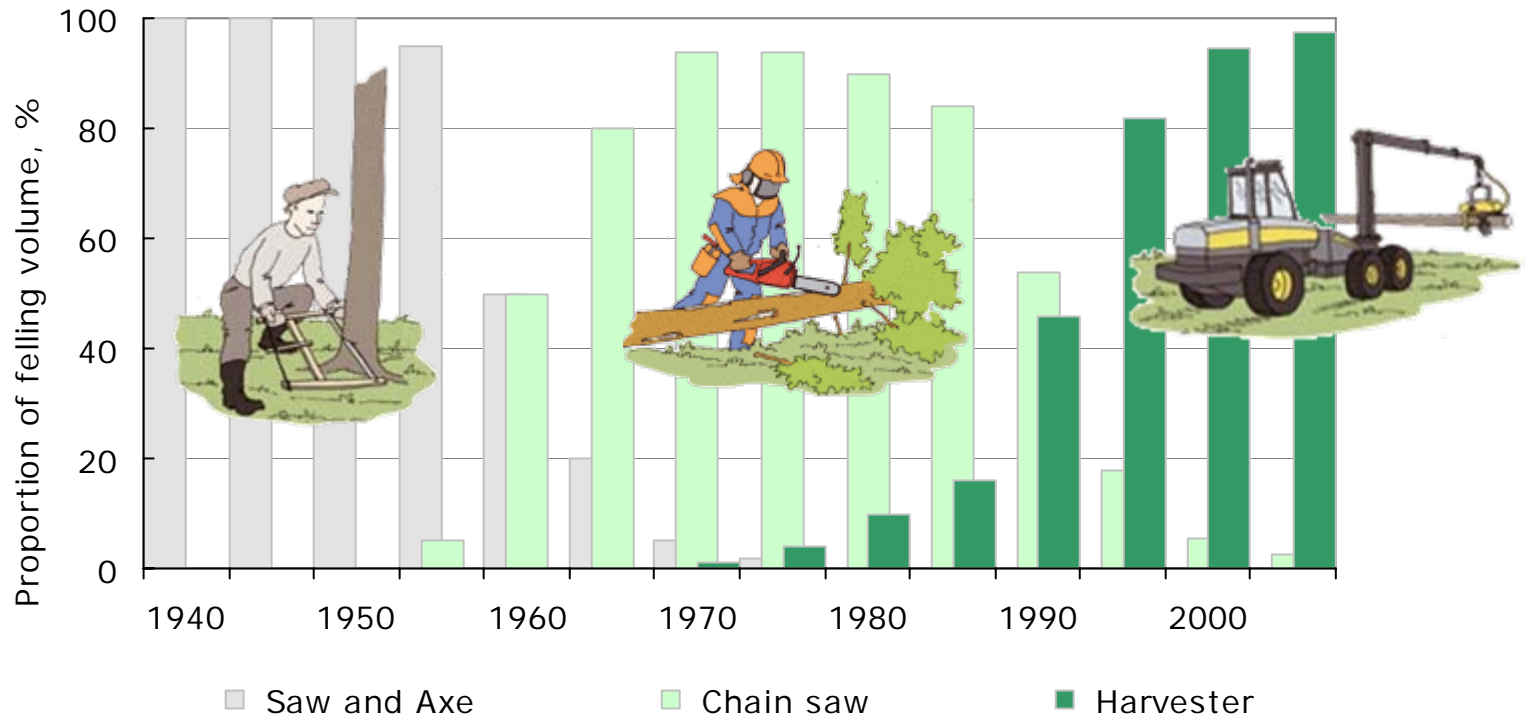
Source: Finnish Forest Research Institute

## Unit Costs 1950 - 2005

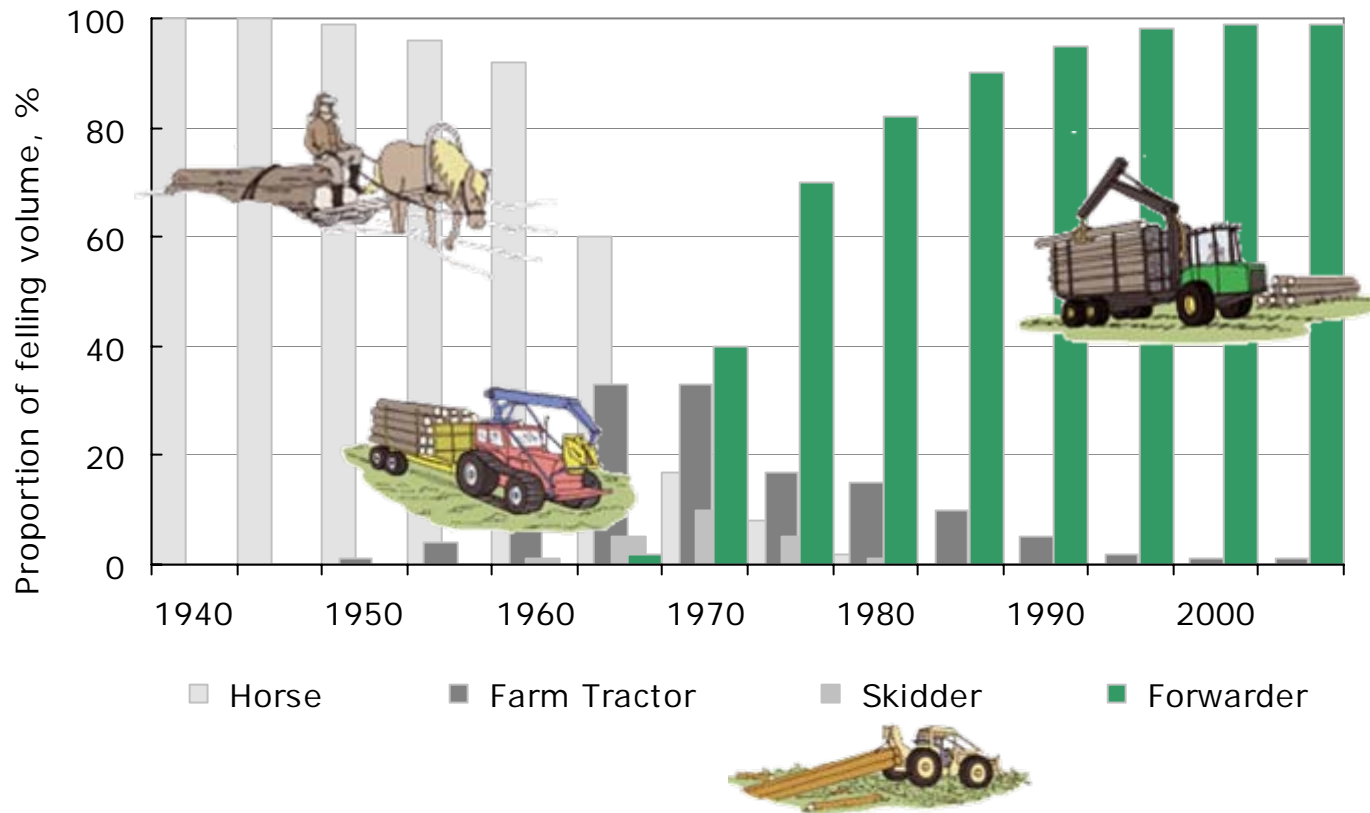


Real costs have been deflated by the wholesale price index.

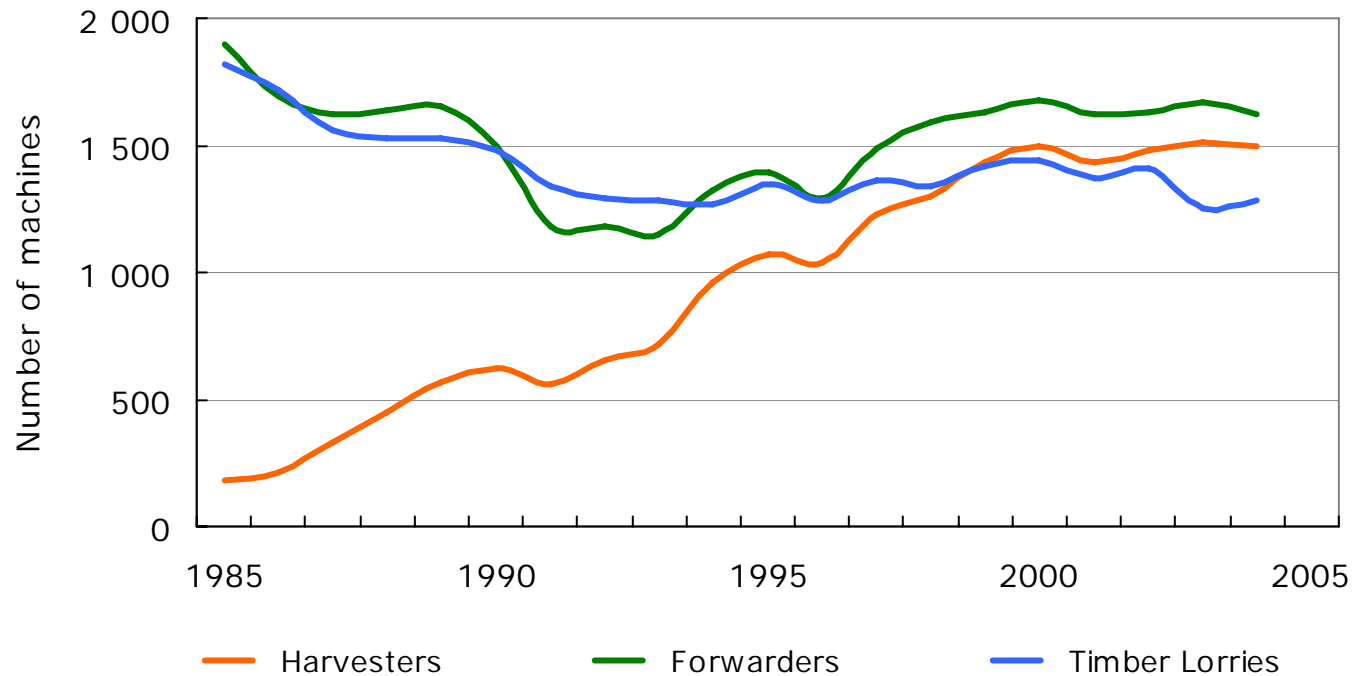
## Felling Techniques 1940 - 2005



## Forest Haulage Techniques 1940 - 2005



## Number of Machines and Lorries 1985 - 2005



Source: Finnish Forest Research Institute

## Costs and Volume

	Costs million €	Timber volume million m <sup>3</sup> ob	Unit costs €/m <sup>3</sup> ob
Motor-manual felling	14.10	0.9	
Mechanised felling	124.13	23.0	
<b>Felling total</b>	<b>138.23</b>	<b>23.9</b>	<b>5.59</b>
Forest haulage	81.83	24.0	3.37
Harvesting to roadside	102.38	12.0	
<b>Harvesting total</b>	<b>322.44</b>	<b>36.0</b>	<b>8.96</b>

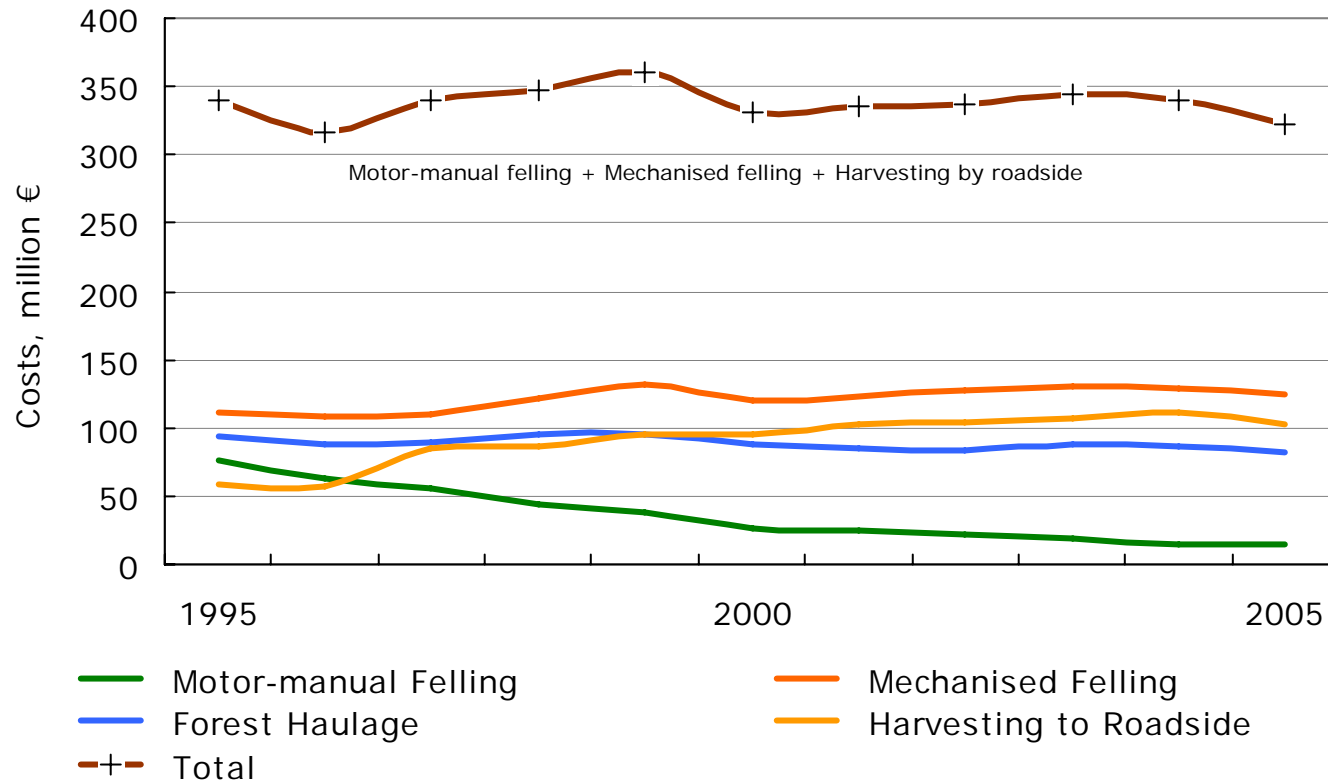
Harvesting by roadside = mechanised felling and forest haulage by same accord.

The unit costs of felling include motor-manual and mechanised felling as well as the estimated part of felling of 'harvesting by roadside'

The unit costs of forest haulage include forest haulage related to motor-manual and mechanised felling as well as the estimated part of forest haulage of 'harvesting by roadside'

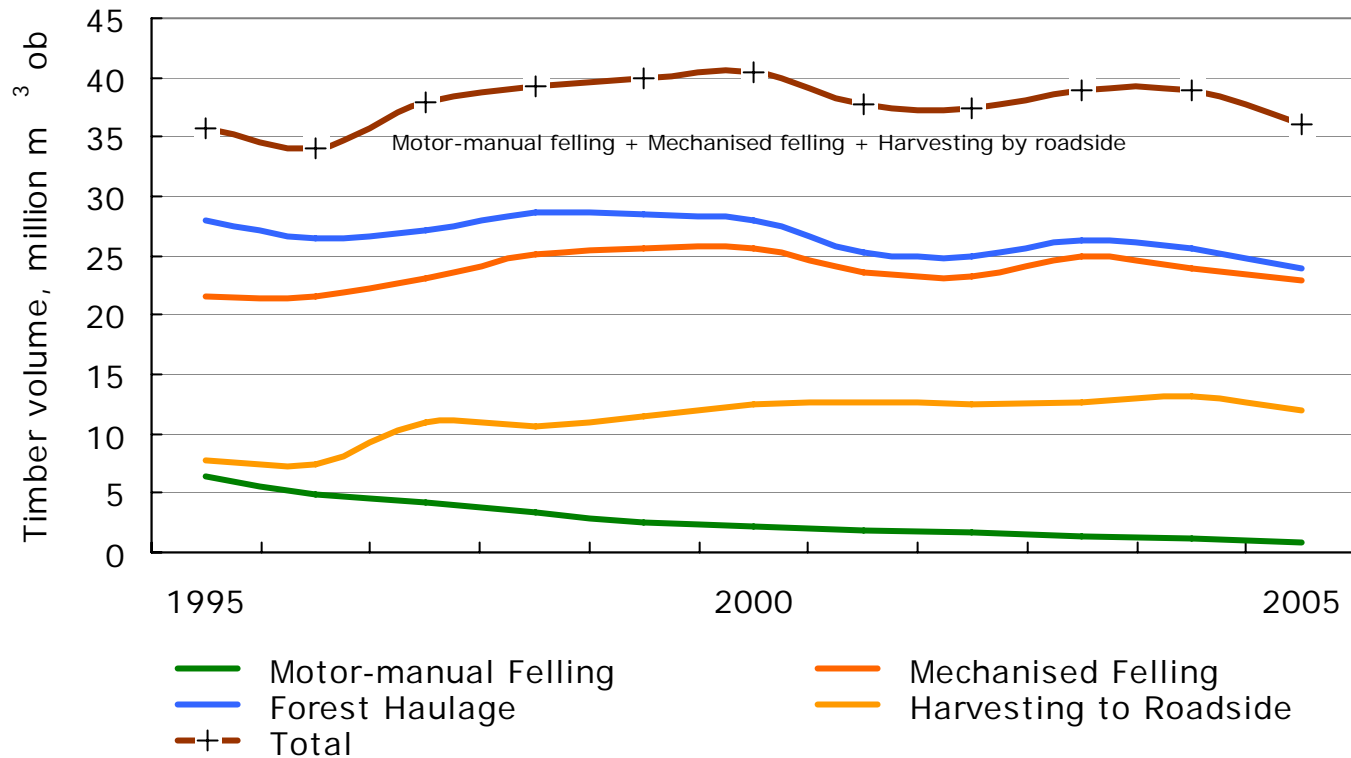


## Costs 1995 - 2005



Harvesting by roadside = Mechanised felling and forest haulage by same accord.

## Timber Volume 1995 - 2005



Harvesting by roadside = Mechanised felling and forest haulage by same accord.

## Unit Costs by Felling Method

	Thinning	Regeneration felling	Total
	Unit costs, €/m <sup>3</sup> ob		
Motor-manual felling	17.17	12.67	14.97
Mechanised felling	8.62	4.11	5.41
<b>Felling total</b>	<b>9.20</b>	<b>4.34</b>	<b>5.78</b>
Forest haulage	4.14	3.10	3.41
Harvesting to roadside	9.28	8.17	8.53
<b>Harvesting total</b>	<b>11.84</b>	<b>7.67</b>	<b>8.96</b>

Harvesting by roadside = Mechanised felling and forest haulage by same accord.

## Unit Costs by Timber Assortments

	Pine	Spruce logs	Plywood	Pine	Spruce pulpwood	Birch	Total
	Unit cost, €/m <sup>3</sup> ob						

Harvesting  
total

6.10

5.92

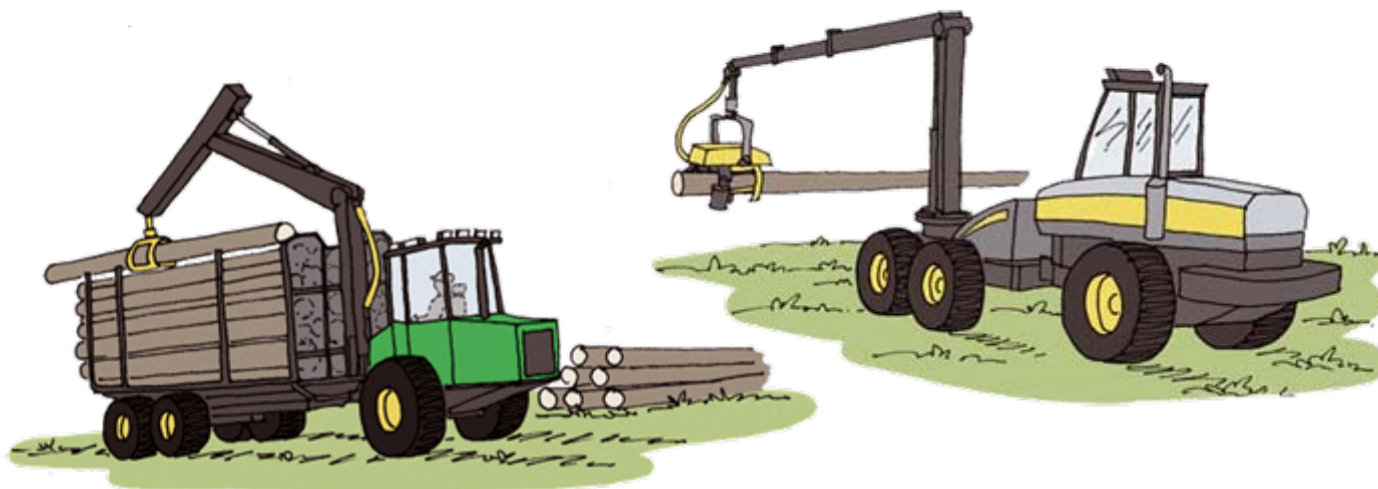
7.02

11.52

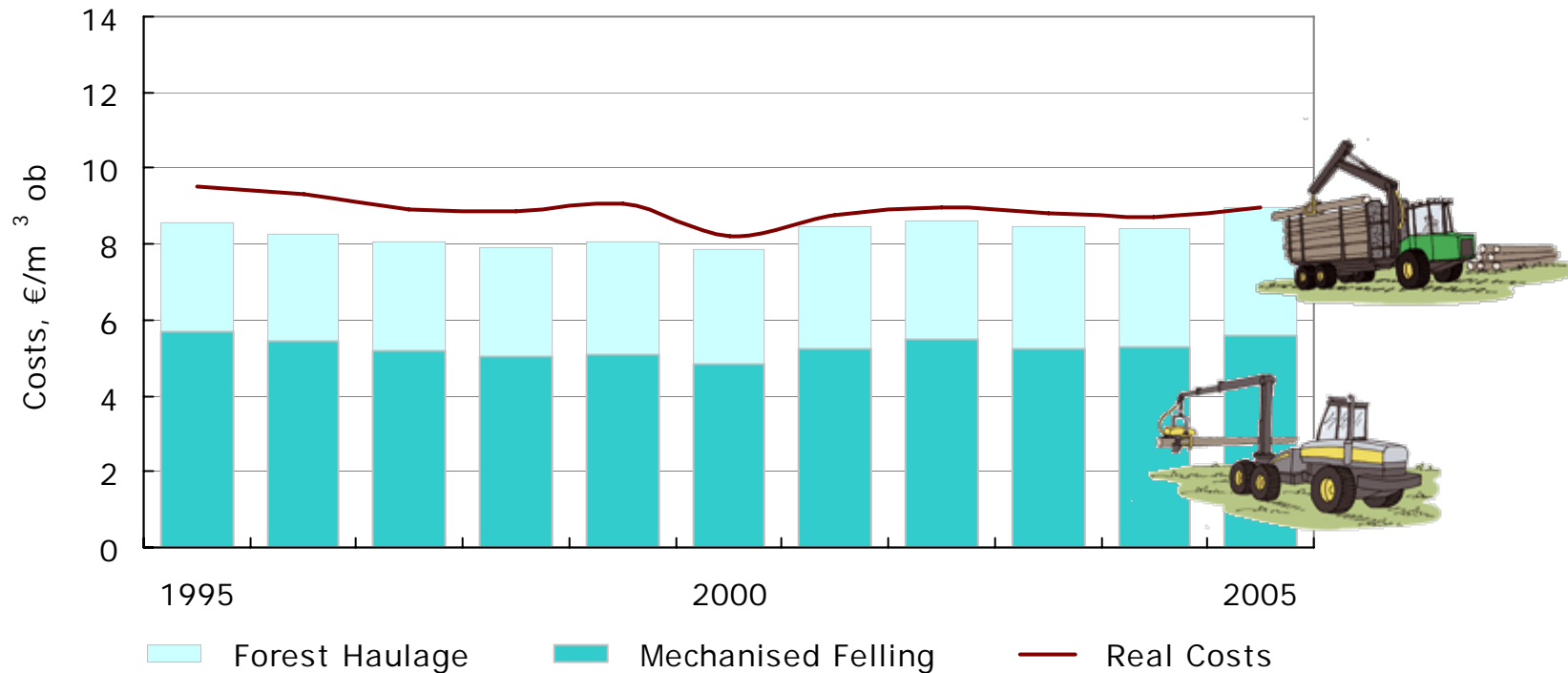
10.85

12.55

8.96

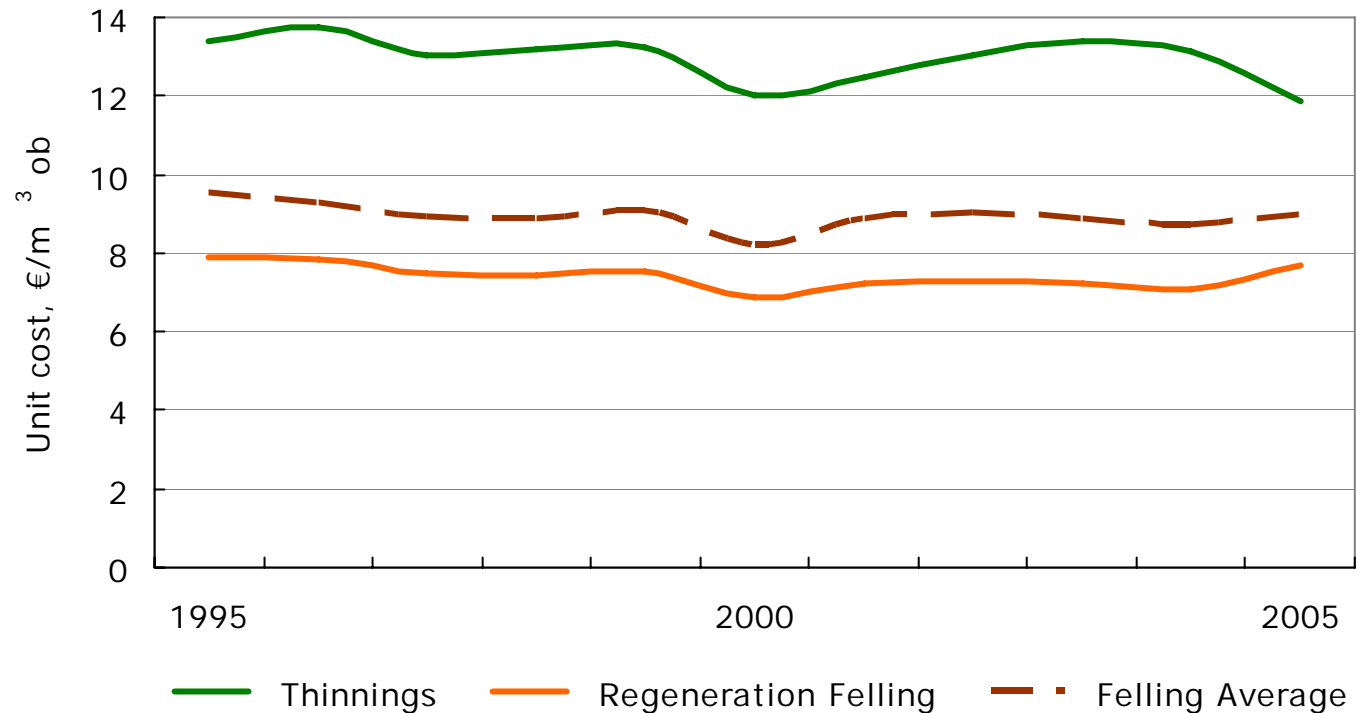


## Unit Costs 1995 - 2005



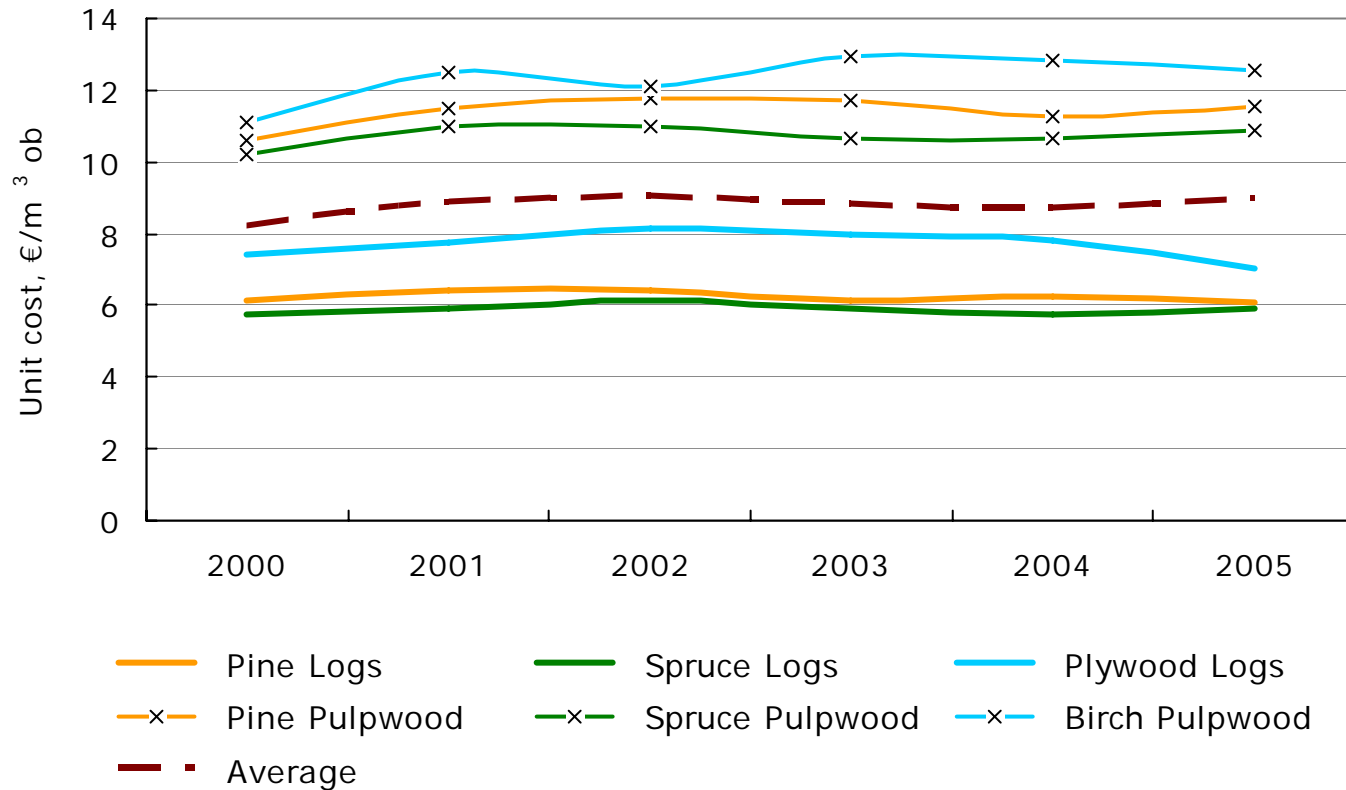
Real costs have been deflated by the wholesale price index.

## Unit Costs 1995 – 2005 by Felling Method



Real costs have been deflated by the wholesale price index.

## Unit Costs 1995 – 2005 by Timber Assortments



Real costs have been deflated by the wholesale price index.

## Proportion of Mechanised Felling

	Thinning	Regeneration felling	Total
	Per cent of timber volume		
Proportion of felling method	30.9	69.1	100.0
Motor-manual felling	4.4	1.9	2.6
Mechanised felling	95.6	98.1	97.4

Mechanised felling includes mechanised felling and harvesting by roadside



## Proportion of Mechanised Felling 1995 - 2005

